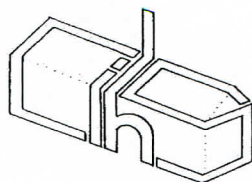


# Cumbria Industrial History Society



## BULLETIN

---

No. 59

AUGUST 2004

### CONTENTS

Page 2	Forth coming events, site news.
Page 3	Book review.
Page 5	Cumbrian milestones
Page 6	Spring conference report, Nibthwaite meeting report
Page 8	Descriptions of industries etc.
Page 15	What was this building?
Page 16	Committee details

### EDITORIAL

This summers meeting have been well attended by the members of the Society and friends and have been greatly enjoyed by all. There is still two meeting to come and details are enclosed. Unfortunately the October conference has been cancelled this year, but the committee is hoping to resurrect it next year again. The committee is already well ahead with the planning for next years visits and they hopefully should include, lead mining in the South Tyne valley, Sedgewick and Gatebeck gunpowder mills, Force Crag mines to see the restored plant and Newby Bridge corn mill.

If any of the membership have any ideas for meetings the committee are always happy to hear from them.

## **SOCIETY EVENTS**

### **GREENSIDE MINE SUNDAY 1<sup>ST</sup> AUGUST 2004**

Meet 10.30 am at the National Parks car park in Glenridding before driving up to the mine site. This meeting is being led by Warren Allison who has researched the mines extensively. There will be an opportunity at the end to visit Warren's display on the mines history in Glenridding village hall.

### **NORTH YORKSHIRE FLAGSTONE MINES SATURDAY 18<sup>TH</sup> SEPTEMBER 2004**

Meet in the car park of Hawes Museum SD 876 898 at 10.30 am. This is an underground trip and you will require a safety helmet and lighting. The mine is dry the roof is reasonable high but old clothes are advised. Possible visit to Gayle Mill in afternoon as seen on Restoration.

### **OCTOBER CONFERENCE**

## **CANCELLED**

### **NOVEMBER EVENING MEETING TUESDAY 9<sup>TH</sup> NOVEMBER 2004 COCK AND DOLPHIN KENDAL 7.30 PM**

A talk by a British Waterways representative on the proposed redevelopment of the Lancaster canal in the Kendal area.

### **APRIL CONFERENCE AND AGM. 2005**

Present title is the explosives industry. Further details in the next Bulletin

## **SITE NEWS**

### **SHADDON MILL CARLISLE**

Planning permission has been granted to convert this grade 2\* listed building into 58 apartments, this will include a glass elevator on the outside of the seven storey building. This mill, standing next to the famous Dixon's chimney, was built in 1836 by Peter Dixon originally as a cotton spinning mill. It ceased cotton production in 1883 and was converted to woollen production. The Weaving shed to the rear are still used for weaving by Linton Tweed. The plans also include the conversion of the boiler house to a café/bar.





## NENTHEAD DRESSING PLANT

The Vielle Montagne Zinc company built a new dressing mill at Nenthead after the old London Lead Company dressing plant was destroyed by fire in 1905. This plant opened in 1910 and worked both the mined ores from the Nenthead area and also reworked a large amount of the old dump material. The original building was five storeys constructed with an iron frame and bricks. The main part of the site was cleared when the mill ceased to be used but the lower portion was retained and used as a garage by Wright Bros. For their coach business. This remaining part of the building is now to be demolished.

## KENDAL BONDED WHAREHOUSE

This was originally part of the station complex and is now being converted into shopping space.

### BOOK REVIEW

#### **INTRODUCTION TO THE GEOLOGY OF ALSTON MOOR. BY RUSSELL BULMAN. NORTH PENNINE HERITAGE TRUST 2004 ISBN 0-9541845-2-1 PRICE £9.50**

For those people interested in the lead mining industry of the North Pennines then a basic understanding of the geology of the area is required. Russell is a native of Nenthead and a professional geologist. He writes in a very easily read manner. He splits the main part of the book into four parts. The first part deals with the underlying rocks that never reach the surface including the under lying Weardale granite that plays an important part in the mineralisation of the area.

The second part deals with the production of the carboniferous rocks that cover the area and are the reason for the landscape of the area. He deals very succinctly with the way in which each type of rock is laid down in each cyclotherm and the reason for the number of cyclotherms that occurred.

The third part deals with the important part for the industrial archaeologist the mineralisation of the area. This deals with both the production of the faults and their subsequent mineralisation. He covers the reason for both vein production and also the reason for flat production which were so important for the economics of lead mining in the past.

The final section covers the rest of the post carboniferous period including the Armathwaite Dyke and the effect of glaciation on the landscape. There then follows three useful appendix covering the primary minerals found in the area, the secondary minerals that occur usually due to oxidisation of the primary minerals in the mine or on the dumps and finally the many fossils that can be found mainly in the limestones of the area.

Like all North Pennine Heritage Trust books it finishes with two short walks to illustrate the topic of the book. The first is in the upper Nent valley starting at the Trust centre at Nenthead and the second is along the South Tyne from Tynehead. Having now followed both these walks and having thought that I knew both areas well it is quite amazing what the untrained eye misses.

**TIN TABERNACLES. BY IAN SMITH. 4TO, 198PP, INDEX, ILLUSTRATED THROUGHOUT. PUBLISHED BY CAMROSE, PEMBROKE. £24.95 ISBN 0-9547126-0-9** Available to order from new bookshops and internet booksellers.

If you travel down the A66 from Brough to Penrith, soon after Crackenthorpe you will pass a derelict and rather rusty corrugated iron church. It is by no means the only such church in Cumbria, but before it finally disappears it has been recorded by Ian Smith in his new book.

The 'Tin Tabernacle', as such buildings were often known, was the result of a rapidly growing demand for somewhere to worship following the religious revival of the mid-Victorian era. Traditional chapels and churches were costly to build. Often it took years to raise the money and get the building completed. Meanwhile improvements in corrugated iron sheet making and the availability of wood-working machinery meant that a prefabricated building could be bought for under £100 and erected for a few pounds more.

Hundreds were sold and they were found everywhere from the far west of Cornwall to the Scottish highlands. Many were short-lived and as permanent buildings replaced them there was a flourishing second-hand market. Others were kept on as Sunday Schools or Church Halls. Often the hoped-for brick church never materialised and the congregation stayed faithful to its tin hut. Perhaps they were the lucky ones, as maintenance costs are far less than those of a more traditional structure!

Surprisingly no-one has seriously examined these buildings before in spite of the fact there was one in nearly every parish at some time. Ian Smith, a graphic designer, was attracted by these brightly coloured buildings as he drove round the country. Fortunately he is an expert photographer as well as being a talented book designer and the result is this collection of pin-sharp images from all around the country. Some are immaculately kept, some, like Crackenthorpe, are almost gone, and in between there is a wide variety of gently maturing churches and examples re-used for everything from houses to garages.

An introductory section gives the background to these buildings, while a short section at the back covers some Icelandic examples. In fact, there was a flourishing export business in such sectional buildings, including bungalows and pavilions as well as churches, while countries like New Zealand imported the sheets and used local timber for the frames. Whether as a book to browse through at home or an inspiration to look for examples on your travels, this



book can be thoroughly recommended. The author has a website, [www.tintabernacles.com](http://www.tintabernacles.com) and is keen to hear of buildings he has not yet photographed.

Chris Irwin

**CARLISLE'S CRANE MAKERS: THE COWAN SHELDON STORY BY ALAN EARNSHAW PUBLISHED NOSTALGIA ROAD £9.99**

Cowan Sheldon started in a small way at Woodbank to the south of Carlisle in 1846 as manufacturers of locomotive engines. They never actually produced an engine but did carryout various castings for locomotives. They diversified into coal handling equipment and eventually they moved to new premises on London Road, Carlisle. This site had been developed as a crane maker by George Davey who had subsequently become bankrupt and Cowan Sheldon acquired the site at auction.

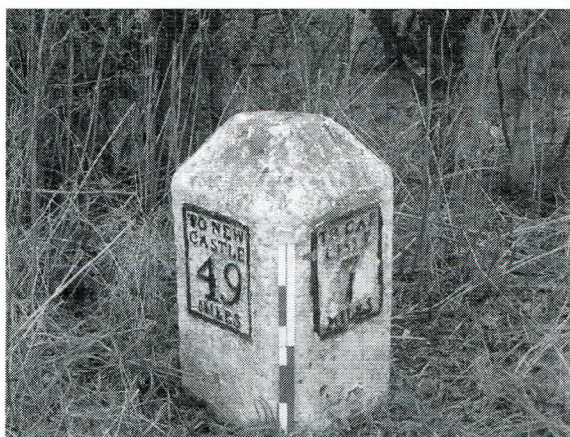
The story of the business from the start to its end in the 1990's is told using the commercial accounts of the business. The book is excellent illustrated with the wide range of lifting equipment that Cowan Sheldon produced from floating cranes, dock yard cranes and railway cranes.

**HONISTER SLATE MINES AND QUARRIES LAKE DISTRICT NATIONAL PARK AUTHORITY. Free leaflet available at LDNPA information offices.**

This is a free leaflet produced by LDNPA to explain the work carried out by them and English Heritage during their archaeological survey and conservation of the remains of the slate industry in the area. The leaflet gives a brief description of the geology and history of the area and also the types of conservation and archaeological techniques that were used on the site. But by far the best part of this leaflet are the detailed maps showing the position of the archaeology and very good photographs of the main features both before and after conservation.

Used with the various books on the slate industry this leaflet will greatly aid anyone wanting to study the industrial remains in the area.

**CUMBRIAN MILESTONES**



MILE STONE AT NY 493 600. CAST IRON PLATES ON A STONE PILLAR. SCALE 0.5M

## **SPRING CONFERENCE REPORT**

This was yet enough well attended spring conference with over 50 delegates present. The theme of farm buildings seemed to have stimulated people's interest. The first speaker was Geoff Brambles who gave an outline of the geology of the area and then went on to show how the under lying geology affects both the look of the country but also the stone built structures within the landscape. He went on to emphasis that it is the rocks of the area that makes the rural landscape of each area so distinct.

The second speaker was Andy Lowe from the Lake District Planning Authority. He gave an excellent illustrated talk on the traditional farm buildings of the Lake District. This included the different types of barns present in the area and their different traditional uses. He also covered power on the farm in the form of water-powered threshing machines and also horse gins. He looked at other types of farm buildings including pig sties, hen sheds, dovecotes and bee boles.

He finished his talk by illustrating how the Lake District Planning Board is helping to conserve the traditional buildings and not just by converting them to new dwellings.

Lunch was of the usual high standard as expected at the College and the delegates found plenty of things to discuss and Chris's bookstall did its usual good trade.

The afternoon session was started by Nina Jennings, who talked about the history and construction of Clay dabbin cottages. These are mainly found on the Solway Plain where there is a lack of good building stone. They were usually built on a foundation of large field clearance stones. On the Solway Plain the crucks for the roof tend not to be selfstanding. Roofs originally were either thatch or sods. She showed how the cruck cottage developed from the long house and the position of the firewall is very important in determining the development of the house.

The final speaker of the conference was Graham Brooks who spoke on the development of the modern farm building. He looked at the reasons for the change from the traditional cow shed to the modern large span building including the development of the Newton Rigg cubicle.

He then showed the different construction methods used in modern farm buildings.

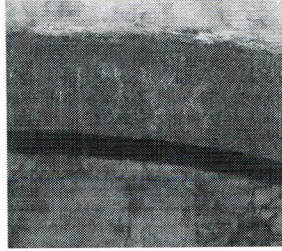
The conference closed with the Societies Annual General Meeting.

## **NIBTHWAITE EVENING MEETING**

A small group of members arrived at Lower Nibthwaite on a June evening which did not promise to remain fine. We were welcomed by members Lawrence Hill and his partner Brenda how live in the hamlet and have researched the history of the area. They quickly showed what looked like a collection of cottages contained many industrial remains. Starting at the top of the hamlet we looked at the charcoal store, which has been converted into a cottage. But with the use of old photographs it was possible to see the original structure. After a discussion about the change in the route of the road up the valley and the possibility of a



small building shown on early maps being an ore store, we moved to what was the highlight of the tour. Entering a neighbour's garage we descended into the cellar and there is the intact remains of the eighteenth century blast furnace. The structure remains to about 15 feet high and both the blowing and tapping arches still remain although the base of the furnace has been removed.



DALE ON LINTEL OVER THE TAPPING ARCH



REMAINS OF BLOWING ARCH



OUTSIDE OF BUILDING SHOWING OBVIOUS CHANGE FROM THE STRUCTURE OF THE FURNACE AND THE BOBBIN MILL ABOVE



We then stepped outside to view the site of the waterwheel that supplied the power to the site, the amazing dam and water system from the River Crake. The use of old photographs again showed the way the building had been converted to a bobbin mill and the position of the later saw mill. Most of the members of the party were green with jealousy by this time, of the owner of the property, what a fantastic house and garden

We then moved next door to Lawrence's property to view the site of the wood yard and for a welcome cup of coffee and to view further documents relating to the area and photographs of the area.

All members present on the trip would like to thank Lawrence and Brenda for their hospitality and also that of their neighbours to allow us access to their private property.

### **Descriptions of manufacturing businesses, premises, processes, and products in the *Carlisle Journal*, 1814-15**

(Continued from the *Bulletin of the Cumbria Industrial History Society*, No.57, April, 2004)

**Compiled by G. W. Oxley**

#### **209. Bleach green at Cockermouth**

There is a plentiful supply of water, a good water wheel and other conveniences for bleaching, a barn, byres, stables and eight acres of land surrounding the house with a further eighteen nearby. Anything further necessary for business would be erected or provided by the proprietor. The premises were lately occupied by Mr. Atkinson Fletcher, deceased.      Advertised to let, apply to J. Penny of Gilcrux or to Davonby Hall, *CJ* 794, 8 Jan 1814

#### **210. Cotton mill at Damside, Carlisle**

Two buildings of four stories standing at an angle and measuring (internally) 87 feet 8 inches by 25 feet 7 inches and 71 feet 4 inches by 23 feet 8 inches; engine house adjoining; picking room and other conveniences; dwelling house. The buildings are of red freestone and covered with blue slates and were recently occupied by Wm. Wood.      Advertised to let by the owner, D Pattinson, *CJ* 794, 8 Jan 1814

#### **211. Brewery at Cockermouth**

Formerly the property of John Russel of Cockermouth, brewer, deceased, comprising a well built dwelling house and garden formerly occupied by John Russel, brew house, mill house, cellars, offices and dwellings above them, two good malt kilns (60 feet by 19 feet and 45 feet by 16 feet), granaries, rooms for storing malt, stables, cow house, hayloft.  
Advertised for sale by the executors of John Russel, *CJ* 794, 8 Jan 1814

#### **212. Weaving shops at Towhead, Penrith**

They can hold eight or ten looms  
Advertised to be let, apply, Mrs. Holmes, at Towhead, *CJ* 795, 15 Jan 1814

#### **213. Weaving shops at the Sallyport, Carlisle and cotton mill at Langholm (one concern)**

A building (90 feet by 18 feet) at present used as a warehouse with a warping room and dwelling rooms above but originally built as a weaving manufactory; also a large yard and stabling for four horses.  
Advertised for sale, *CJ* 801, 26 Feb. 1814



**214. Tan yard at Low Wisely Bridge near Wigton**

Including a patent bark mill with all the machinery and utensils there to belonging and three tons of oak bark  
Advertised for sale by the assignees in bankruptcy of Joseph Matthew, *CJ* 804, 12 March 1814

**215. Fulling mill and dye house at Egremont**

Contains six good cold vats, two hot vats, three boilers and all other utensils; the tenant may be accommodated  
with a bleaching ground if required  
Advertised to let, apply John Peele & Co., Egremont, *CJ* 804, 19 March 1814

**216. Coach building in Kendal**

James McNaught has 'procured several experienced workmen in the different branches from London' and can  
make all kinds of fashionable gigs on the neatest and newest principles as well as four wheeled patent carriages  
with or without perches, barouches, phaetons and sportsmen's dogcarts  
Advertisement, *CJ* 807, 9 April 1814

**217. Tan yard at Wigton**

Forty nine vats, eighteen handlers, six scouring pits, three limes, three butts, three water dabs, a running stream  
of water adjoining the yard, two drying shades, a patent bark mill, and every other convenience for a extensive  
trade. Formerly occupied by James Bolton, deceased. The tenant may be accommodated with a convenient  
dwelling house and out offices. Advertised to be let for the unexpired eight and a half years of a lease on  
application to John and Edmund Robinson of Wigton, manufacturers, *CJ* 809, 26 April 1814

**218. Hat manufacture in George Street, Carlisle**

A fire has destroyed a building at the hat manufactory of Ferguson & Co. The first report erroneously stated that  
the building was insured but the greatest loss will be sustained by not being able to complete orders as soon as  
intended. The fire occurred in the building used to make waterproof hats where very inflammable materials were  
used. Mr. Ashton, the chief manager had a lucky escape. It is thought the fire was caused by  
lightning.  
Editorial matter, *CJ* 809 & 810, 26 & 30 April 1814

**219. Tow spinning and bleaching at Southwaite Green near Penrith**

A water mill, a good dwelling house, large and commodious warehouses, stable, byre, drying house, and other  
buildings situated on the River Eamont about a mile from Penrith. Until recently occupied by John Ritson. The  
premises could readily be converted to a corn or paper mill, cotton manufactory, brewery or other business  
requiring command of water and extensive buildings.  
Advertised to let by Dr. Harrison, the owner, *CJ* 810, 30 April 1814

**220. Weaving shops at Caldcoates near Carlisle**

Eight good dwelling rooms and four weaving shops, two of four looms and two of three looms, two gardens  
well stocked with fruit trees, and a rivulet of water running down one side and occupied by Joseph Pattinson  
Advertised for sale by Thomas Parkins of Wigton, the owner, *CJ* 812, 14 May 1814

**221. Hat manufactory in Willow Holme near Carlisle**

D. Blamey has established a hat manufactory in premises formerly occupied by W. Donald as ?bleaching  
houses. He has engaged a foreman who has perfected himself in the most eminent houses in the United  
Empire  
Advertisement, *CJ* 820, 9 July 1814

#### **222. Seaton Ironworks near Workington**

The premises are situated on the River Derwent, which provides a copious supply of water, one mile from Workington to which there is a railroad and from whence the business has an extensive trade with Ireland where their manufactures are held in the greatest estimation. The premises occupy thirteen acres of land exclusive of the canal which communicates with the River Derwent for the purpose of conveying water. They comprise a blast furnace which is able to work thirty to forty tons of pig iron a week and was substantially rebuilt in 1813; a large foundry or moulding house, a double forge with slitting and rolling mill and every other convenience; warehouses; stabling for twenty five horses; commodious house for the manager; foreman's dwelling house; and cottages for the workmen all in a complete state of repair and built of stone, brick, and slate. Coal may be had abundantly in the neighbourhood. The present proprietors occupy a colliery which the purchaser may probably take over by agreement. Iron ore is abundant locally and may be imported from Lancashire. The works are held on a 99 year lease from the Earl of Lonsdale running from 25 march 1762 with a ground rent of £40

Advertised for sale because the majority of the present partners live at a considerable distance from the works and desire to retire from business. Printed particulars may be had from Mr. Dickinson, the managing partner at the works, from the company's warehouse in Roper St., Workington or in London, Edinburgh, Dublin, Hull, and Liverpool, *CJ* 824, 6 Aug. 1814

#### **223. Textile printing at Cummersdale**

Twenty stout active youths are wanted as apprentice calico printers: 'youths of industrious and sober habits will be given every encouragement' Eight absconded apprentices are sought  
Advertised for by Forster, James & Co., *CJ* 829, 10 Sept. 1814

#### **224. Bleaching at Grinsdale near Carlisle**

A dwelling house, all other (newly erected) out offices necessary for the business, six acres of land, a plentiful supply of water and a good water wheel. The chemical apparatus and all other utensils will be sold separately or let with the premises. The business has been carried of for upwards of six years.  
Advertised to be let by the owner T. Sihson, *CJ* 830, 17 Sept. 1814

#### **225. Freestone quarry at the Gill West Newton**

It has been open and worked for two years and produces excellent stone which is easy to obtain and work.  
Advertised to be let by John Langcake of Warwick Hall, near West Newton, *CJ* 832, 1 Oct. 1814

#### **226. Brewery at Cockermouth**

A well-built dwelling house with a garden and orchard, brew house, cellars, malt kiln, granaries, rooms for storing malt, four hundred half barrels, 444 quarter casks, and all the utensils needed for brewing.

Advertised to be let by the owner, John Hartness, *CJ* 833, 8 Oct. 1814

#### **227. Fulling, bleaching and dyeing at Harraby Green near Carlisle**

A dwelling house, out offices, and gardens; fulling mill; dye house; warehouse and other buildings; and 28 acres of land. The River Petteril and the Harraby corn mill dam race run through the premises 'which for many years have been occupied by Messrs. Lamb, Scott, Waldie, & Co., calico printers for bleaching and other purposes'.  
Advertised for sale, apply to John Waldie at his counting house in Castle St., *CJ* 835, 22 Oct. 1814

#### **228. Blue slate quarries at Thrang Cragg in Langdale and Whire Moss in Grasmere**

'These quarries are conveniently situated for conveyance to all parts of the kingdom by the canal now cutting between Tewitfield and Kendal'. They are 15 miles from the latter and 16 miles from Keswick by excellent roads.  
Advertised to be let, apply to the Earl of Lonsdale's agent, *CJ* 835, 22 Oct. 1814



**229. Cotton mill at Warwick Bridge**

Stone masons required to construct a cotton mill and a cottage.

Advertisement for tenders to be sent to Warwick Cotton Works, *CJ* 843, 17 Dec. 1814

**230. Corn mill at Highberry Beck on the road from Brampton to Longtown**

A well-erected and nearly new building of stone with red and blue slate and five convenient dwelling houses for small families.

Advertised for sale or to let, *CJ* 843, 17 Dec. 1814

**231. Dyeing in Shaddongate, Carlisle**

Six dyers who can be well recommended from their former employers: 'none need apply who cannot give undoubted testimony to their abilities'.

Advertised for by Penrith, Robley & Co., *CJ* 850, 4 Feb. 1815

**232. Mills at Arthuret**

1. A grist mill and seventy acres at Carwinley, near Netherby

2. A grist mill, houses, offices, and twenty acres at Mill town near Longtown

John Hornsby of Carlisle, millwright, will show the plans intended to be adopted. Robert Graham will show the premises

Advertised to be let, *CJ* 850, 4 Feb. 1815

**234. Cotton manufacture at Maryport**

A manufactory weaving shops, and other buildings last occupied by Brocklebank, Wilson, Gillespy & Co., the owners

Advertised for sale by their assignees in bankruptcy, *CJ* 851, 11 Feb. 1815

**235. Tannery at Wigton**

Nearly ninety pits, a small dwelling house, a horse mill and outbuildings; rent £24 a year. Formerly occupied by Mr. Bolton, deceased.

Advertised to be let, *CJ* 852, 18 Feb. 1815

**236. Iron and brass foundry in Bochengate, Carlisle.**

Stock in trade, a good four horse power steam engine, and all the utensils and implements for carrying on an extensive iron brass and white smith business which had been conducted by Nicholson & Co. for several years.

The purchaser may be accommodated with the extensive buildings and premises by sale or lease

Advertised for sale or to let by David Carrick of Carlisle, the owner; apply Mr Arthur Graham, Losh & Co. At the Brewery, *CJ* 857, 25 March 1814

**237. Lazonby Fell Quarries**

Thomas James returns thanks for past patronage and hopes for future support. He and announces that he has rented the quarries under the Earl of Lonsdale and Isaac Nixon Brown, Esq., After the enclosure of the common.

The quarries have been in the possession of the Jameses for five generations. TJ has on hand a quantity of grinding stones, mill stones & flags 'which are known to be of superior quality for wear'. Hewn work for common building supplied at reasonable rates. JT will attend the White Lion in English St. Carlisle on the first Saturday in each month and the Fleece in Penrith on the first Tuesday

Advertisement, *CJ* 857, 25 March 1814

#### **238. Rush and cane bottomed, painted and stained chair making in Carlisle**

John Strong, for twelve years a partner in Nicholson & Strong of Dumfries, has started business in the shop in Castle St., formerly occupied by Thomas Wilson, brush manufacturer. He sells bedroom. Parlour, and drawing room chairs, sofas etc.. and will continue to make and sell 'at such prices as (he hopes) will procure for him a share of the favour of the public'. Window blinds, gigs, etc. neatly caned & Turning of all kinds done at the shortest notice  
Advertisement, *CJ* 858, 1 April 1814

#### **239. Slate quarries at Patterdale**

Henry Chapman, farmer of Mr Hassell's slate quarries has appointed John Pearson to weigh and deliver slate to the east side of Ulleswater. HC will attend the Lion and Lamb in Penrith to sell slate and to collect money  
Advertisement, *CJ* 859, 8 April 1814

#### **240. Print field at Wigton**

Carried on under the name of Ferguson, Irwin, & Co. and under the management of Mr. Anthony Halliley, 'a careful, sober, and industrious partner'. The bleaching printing and dyeing concerns adjoin Wigton and are held under a lease from Mr. John Dalton. The rolling and plate machines are about a quarter of a mile from Wigton. The mill is held under a lease from the Earl of Egremont and adjoining land rented from others. There are four freehold dwelling houses with ground adjoining the water where a steam engine or other extensions might be erected. One fourth and one sixteenth shares advertised for sale by the owner, George Ferguson of George St., Carlisle, *CJ* 860, 15 April 1815

#### **241. Hat manufactory in George St., Carlisle**

The manufacture and sale of 'light, elastic, waterproof hats' carried on by the firm of Ferguson and Ashton under the management of Joseph Ashton, 'a careful, sober, partner who understands the business well'. Manufactory in George St., Carlisle and shop at 68 Pall Mall, London  
One third shares advertised for sale by the owner, George Ferguson of George St., Carlisle, *CJ* 860, 15 April 1815

#### **242. Weaving in Carlisle**

A dwelling house, winding and weaving shops fronting the tythe barn near St Cuthbert's Church and the adjoining timber yard  
Advertised for sale by the owner, George Ferguson of George St., Carlisle, *CJ* 860, 15 April 1815

#### **243. Bleaching at Cummersdale**

Twenty-seven acres of land at Cummersdale Green, rights of fishing in the River Caldew which runs through the ground and a warehouse, bleaching house, chemical preparation house, water wheel, stove, shed, two dwelling houses for workmen, and a fall of water of about six feet. All at present unoccupied.  
Two third shares advertised for sale by the owner, George Ferguson of George St., Carlisle, *CJ* 860, 15 April 1815

#### **244. Weaving shops in Caldewgate, Carlisle**

1. Four eight loom weaving shops with six two room dwelling houses over and land 49 yards by 171/4 yards
  2. Three four loom weaving shops with six dwelling rooms and a large room (14 feet by 18 feet) over and land 45 yards by 17 yards behind
  3. Two six loom weaving shops with five dwelling rooms over, a yard behind, out offices, and land 16 yards by 11 yards
- Advertised for sale by the owner, John Rigg, *CJ* 860, 15 April 1815



**245. Dye house in Caldewgate, Carlisle**

Dye house of two stories, 45 feet by 36 feet; waterwheel; boiling house, offices, stove houses, a stream of water running through the property; and land in front 42 yards by 24 yards  
Advertised for sale by the owner, John Rigg, *CJ* 860, 15 April 1815

**246. Seaton Ironworks near Workington**

Similar to No. 222 but mentions an iron and brass foundry, a forge with refineries, and ovens for coking coal, and that the premises cover thirteen acres  
Advertised for sale, *CJ* 861, 22 April 1815

**247. Yarn spinning at Holme Head near Carlisle**

W. Bentley announces that he proposes the of spinning an assortment of coarse yarns from No 8 to No.15 hanks to the pound for 'country friends who are in the habit of making cloth for family use'. He will also make cotton laps for wilting. Orders may be left with John Sowerby of Rickergate  
Advertisement, *CJ* 865, 20 May 1815

**248. Dyeing at Damside outside English Gates**

Utensils at the premises formerly occupied by Joseph Thomas Dyer offered for sale: eight leaden vats cased in wood, two copper boilers, one iron boiler, one hot press consisting of a good screw with a drass box, etc., a number of cast iron plates and an oven for heating the same, two pumps, several wooden vessels, drying poles, etc., about twenty yards of tenters with oak posts, and a good horse mill.  
Advertised for sale, *CJ* 873, 15 July 1815

**249. Marble mills at Stonehouse near Dent**

Daniel Alderson has completed improvements at the marble mills and can supply chimney pieces, monuments, tables, etc.. Of the finest black or other marble from the vale of Dent  
Advertisement, *CJ* 877, 12 Aug. 1815

**250. Woollen manufactory at Willow Holme, Carlisle**

A commodious manufactory with all the machinery and utensils for making carpets, blankets, and other woollen goods: five carding engines, five Billys or spinning wheels, a twisting frame, two yarn reels, a teaser, ten carpet looms complete, winding wheels and other articles used in manufacturing and dyeing; also a quantity of ashes, alum, fustic, logwood and other dye woods. The machinery is in good repair and the business enjoys a good country trade  
Advertised for sale by the assignees in bankruptcy of John Wood, apply John Elliot. Banker,

*CJ* 886, 14 Oct. 1815

**251. Bleaching at Dalston**

A web of damask twenty-four yards long by two yards wide has been stolen from John Robson's bleach field at Daston has a clover leaf pattern with a particular mark within a half a quarter of the edge by two of the leaves lying reverse way of the pattern and without a border. A reward of ten pounds is offered for information leading to the conviction of the offender.

Advertisement, *CJ* 890, 11 Nov. 1815

#### **252. Brewery at Appleby**

Erected within the last seven years and comprising a brew house, two tun houses (one for ale and one for small beer), a malt house with a cistern for steeping seventy-five Winchester bushels at once, granaries for barley and malt, vaults for storing ale, a good dwelling house suitable for the brewer, a neat dwelling house and garden, a stable for three horses, a counting room, and other out buildings. The utensils, (all nearly new) to be taken at a valuation. The situation of Appleby is well calculated for a common brewery being surrounded by a fine tract of country for the growth of barley 'amidst a selection of choice customers; and where the consumption of ale altogether depends on the common brewer'. The proprietor has been in business for thirty years and now wishes to retire

Advertised to be let for eleven years by the owner, John Parkin, *CJ*

891, 18 Nov. 1815

#### **253. Ironwork in at Kendal**

A journeyman white smith wanted: a good steady man who is a good forger will meet with constant work and liberal wages.

Advertised for by F. Cornthwaite & Co., iron founders, *CJ* 892, 25 Nov. 1815

#### **254. Steam engine in Carlisle**

Excellent six horse power Boulton and Watt engine with patent slide valve, in good repair

Advertised for sale by Edward Rothwell & Co., Mains, Carlisle, *CJ* 892, 25 Nov. 1815

#### **255. Corn mill at Waverton**

Water mill and kiln in complete repair, with a dwelling house, barns, byres, stables, and piggeries, outbuildings, orchard, garden, and 15 acres of land, two miles from Wigton on the Maryport Road. The mill has been doing an extensive trade for a series of years.

Advertised to be let, apply to George Penny, Aspatria Mills, *CJ* 892, 25 Nov. 1815

#### **256. Weaving in Shaddongate, Carlisle**

Two neat well-built dwelling houses suitable for the residence of genteel families at present occupied by William Embleton and John Penrth as tenants, and thirteen weaving shops having from six to four loomsteads each and dwelling rooms above, all modern built in a most substantial manner of the very best materials and occupied by Thomas Matthews and other tenants. There is land adjoining suitable for building houses or a manufactory

Advertised for sale by the owner, John Lowry, esq. of Bunkers Hill, *CJ* 893, 2 Dec.

1815

#### **257. Cotton manufacture at Warwick Bridge**

On Wednesday last about 120 workmen sat down to an excellent dinner at Warwick given by Messrs Dixons to celebrate the erection of the edge wheel newly fitted up at their cotton works. This wheel is of cast iron, twenty-four feet in circumference and ten feet broad and is considered the finest piece of mechanism of its kind.

Erratum: the dimensions should be 23 feet diameter not 24 feet circumference.

Editorial matter, *CJ* 893 & 894, 2 & 9 Dec. 1815

#### **258. Freestone quarries in Wetheral**

Freestone quarries both opened and unopened, the property of Mrs Waugh, deceased

Advertised to be let, *CJ* 897, 30 Dec. 1815



### WHAT WAS THIS BUILDING?

This building is situated at NY 508 454. It is in the top corner of a steeply sloping field with an 'ancient' woodland behind and to one side. The front wall is built from semi-dressed sandstone which has been mortared as are the two gables. The rear wall consists of 5 pillars made from the same stone as the rest of the building. Behind these is the dry stone wall of the field boundary. The roof consists of 5 principal rafters with the beams supported on the wall at the front and the pillars at the rear. Purlins rest on the principal rafters and the roof consists of stone slabs of a material similar to the walls.

Suggested uses for this building have been as a bark drying shed.

Does anyone know of a similar building anywhere in the country?

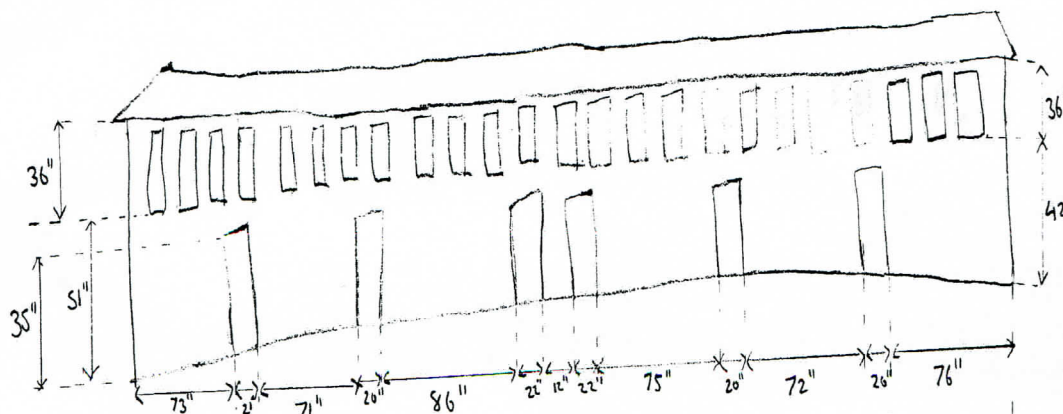


NE gable of building



Front elevation of building

N.W. ELEVATION.



**COMMITTEE MEMBERS**

MR R BAKER  
MEMBERSHIP SECRETARY  
4 BARNES COTTAGES  
BACK LANE  
PREESAL  
POULTON FY6 0HT  
[mbarb@freenetname.co.uk](mailto:mbarb@freenetname.co.uk)

MR G BRAMBLES  
CHAIRMAN  
21 DERWENT DRIVE  
KENDAL  
CUMBRIA  
LA9 7PB

MR G BROOKS  
BULLETIN EDITOR  
COOMARA  
CARLETON  
CARLISLE  
CA4 0BU  
[gbrooksvet@tiscali.co.uk](mailto:gbrooksvet@tiscali.co.uk)

DR I DUNMUR  
CROFT HOUSE  
MOSEDALE  
PENRITH  
CA11 0XQ

MR C IRWIN  
VICE-CHAIRMAN  
FALLOWFIELD  
RAVENSTONEDALE  
KIRKBY STEPHEN  
CA17 4NG  
[chris@thebookhouse.co.uk](mailto:chris@thebookhouse.co.uk)

MRS J A BENNETT  
TREASURER  
BROOMBANK COTTAGE  
LINDAL-IN-FURNESS  
CUMBRIA  
LA12 0LW  
[psfc@btinternet.com](mailto:psfc@btinternet.com)

MRS H CLADWELL  
SECRETARY  
LOW LUDDERBURN  
CARTMEL FELL  
WINDERMERE  
LA23 3PD  
[lowludderburn@btinternet.com](mailto:lowludderburn@btinternet.com)

MR G OXLEY  
9 HUGH LITTLE GARTH  
UPPERBY  
CARLISLE  
CA2 4LQ  
[mail@mcintyre-oxley.fsnet.co.uk](mailto:mail@mcintyre-oxley.fsnet.co.uk)

DR MARGARET ROBINSON  
7 PICADILLY CLOSE  
SCOTFORTH  
LANCASTER  
LA1 4PY

MR R LYON  
CHRONDRENN  
CHURCH STREET  
SKIRWITH  
PENRITH  
CA10 1RQ  
[Ron\\_Lyon@chronserve.freemove.co.uk](mailto:Ron_Lyon@chronserve.freemove.co.uk)